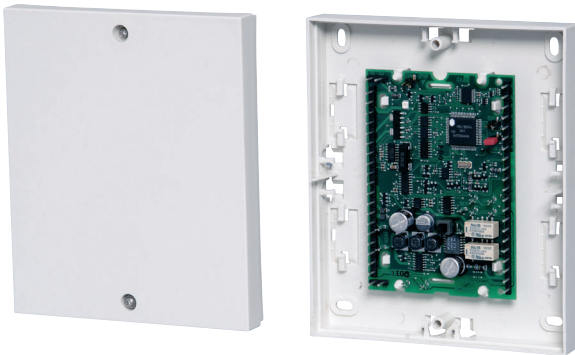


SE 100 GLT SmartKey Arming Device

www.boschsecurity.com



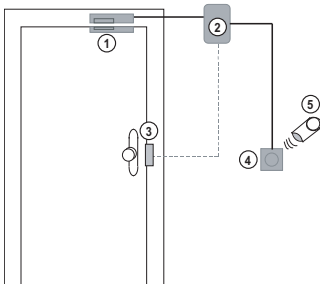
BOSCH
Invented for life



- ▶ The arming device is programmable via the control panel
- ▶ Suitable for various types of doors
- ▶ High security through “Challenge & Response” procedure
- ▶ No manipulation or tampering possible

The SmartKey arming device is a system solution for arming/disarming intrusion alarm systems.

System overview



- 1 SPE blocking element
- 2 SE 100 GLT control unit
- 3 Bolt contact
- 4 Reader
- 5 SmartKey keys

Functions

The individual components of the system can be put together as required for the intended usage. The SE 100 GLT can be operated with or without the blocking element.

SE 100 GLT

The SE 100 conventional (GLT) control unit processes the status reports of all components in the system, communicates these reports to the intrusion alarm system and controls the blocking element. The control unit is mounted in the secure area.

Reader

Arming and disarming is done using an electronic key on the reader. LED and buzzer provide information about the status of the system as well as operation. The reader can be surface mounted or flush mounted (outside the secure area).

Keys with a security card

The system operates like a locking device. The key kit consists of a set number of valid keys and a security card. The control unit is initialized using the security card, and accepts only the keys of the key kit. To order additional keys, the security card must be sent to the manufacturer together with the order. The keys are labeled with a consecutive key number, a security card number and an 8-digit identification number.

Standard key (without security card)

The keys are not numbered and can be read in as often as required. The keys are labeled with an 8-digit identification number.

SPE blocking element

The SPE blocking element is an additional lock for the door and is intended to prevent unauthorized entry to the armed area. The blocking element must always be mounted in the secure area with a kit to allow it to be fitted out for different door types. The SE 100 GLT can be operated with or without the blocking element.

A conventional bolt contact can be connected to the control unit (not part of the scope of delivery).

A conventional standard magnet contact can be connected to the control unit (not part of the scope of delivery).

Certifications and approvals

Region	Certification	
Germany	VdS	G 106067, C SE 100 GLT G 106067
Europe	CE	SE 100 GLT
	CE	SmartKey

Installation/configuration notes

- A maximum of 16 SmartKey keys per system can be used. The keys are read in at the reader.
- The input unit should primarily be installed flush-mounted.

Technical specifications**SE 100 GLT control unit**

Operating voltage	10.8 V to 30 V
Total current consumption including blocking element and reader	
• Standby armed	53 mA
• Standby disarmed	68 mA
• When being engaged	140 mA for 300 ms
• When blocking	200 mA for 200 ms
Environmental conditions	
• Protection category	IP 30
• Operating temperature	-5 °C to +45 °C
• Storage temperature	-40 °C to +85 °C
Housing	
• Material	ABS
• Color	RAL 9002

Dimensions (H x W x D)	160 x 135 x 35 mm
Weight	0.25 kg

Reader

Range	Max. 20 mm
Frequency	125 kHz
Transmission power	250 mW
Transmission power	250 mW
Cable to control unit	Max. 6 m, 6-pin, shielded, permanently cast

Environmental conditions

• Environmental class	3
• Protection category	IP 65
• Operating temperature	-25 °C to +70 °C
• Storage temperature	-40 °C to +85 °C

Housing

• Material	ASA Luran S
• Color	Titanium white (similar to RAL 9010)
Dimensions (H x W x D) For installation in 55 mm surface-mounted/flush-mounted junction box	80 x 80 x 30 mm
Weight	0.35 kg

Ordering information**SE 100 GLT SmartKey Arming Device**

For arming/disarming an intrusion alarm system via the reader as a system solution
Order number **IUI-SKCU1C-100**

Accessories**SPE blocking element incl. surface mounting kit**

For installation on frame/door
Order number **4998013609C20;4998149110**

IUI-SKK-1 standard key

1 x SmartKey key without security card
Order number **IUI-SKK-1**

SPE blocking element incl. flush mounting kit

For installation in frame/door
Order number **4998021691C20;4998149110**

SPE blocking element incl. glass kit

For installation on glass doors
Order number **4998019339.C20;4998013609C20;4998149110**

SPE blocking element incl. NBS 10 kit

For upgrading the NBS 10
Order number **4998149110;4998040651C20**

IUI-SKK-3S key set

3 x SmartKey keys and security card
Order number **IUI-SKK-3S**

IUI-SKK-1S additional key

1 x additional SmartKey key for IUI-SKK-3S key set
Order number **IUI-SKK-1S**

Represented by:

Americas:

Bosch Security Systems, Inc.
130 Perinton Parkway
Fairport, New York, 14450, USA
Phone: +1 800 289 0096
Fax: +1 585 223 9180
security.sales@us.bosch.com
www.boschsecurity.us

Europe, Middle East, Africa:

Bosch Security Systems B.V.
P.O. Box 80002
5617 BA Eindhoven, The Netherlands
Phone: + 31 40 2577 284
Fax: +31 40 2577 330
emea.securitysystems@bosch.com
www.boschsecurity.com

Asia-Pacific:

Robert Bosch (SEA) Pte Ltd, Security
Systems
11 Bishan Street 21
Singapore 573943
Phone: +65 6571 2808
Fax: +65 6571 2699
apr.securitysystems@bosch.com
www.boschsecurity.asia

China:

Bosch (Shanghai) Security Systems Ltd.
201 Building, No. 333 Fuquan Road
North IBP
Changning District, Shanghai
200335 China
Phone +86 21 22181111
Fax: +86 21 22182398
www.boschsecurity.com.cn

America Latina:

Robert Bosch Ltda Security Systems Division
Via Anhanguera, Km 98
CEP 13065-900
Campinas, Sao Paulo, Brazil
Phone: +55 19 2103 2860
Fax: +55 19 2103 2862
latam.boschsecurity@bosch.com
www.boschsecurity.com